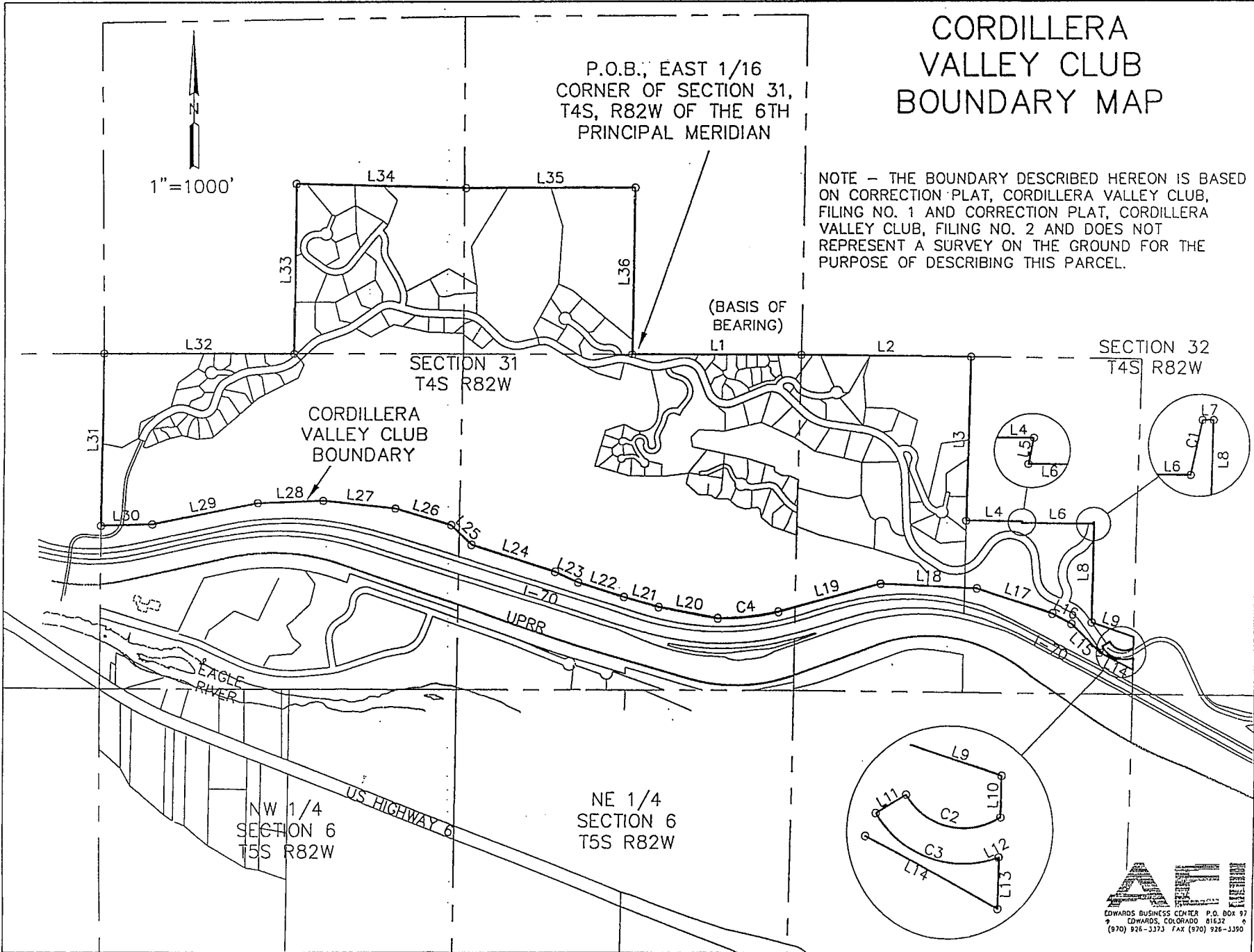
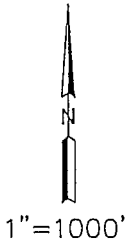


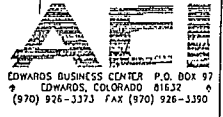
CORDILLERA VALLEY CLUB BOUNDARY MAP

P.O.B., EAST 1/16
CORNER OF SECTION 31,
T4S, R82W OF THE 6TH
PRINCIPAL MERIDIAN

NOTE - THE BOUNDARY DESCRIBED HEREON IS BASED ON CORRECTION PLAT, CORDILLERA VALLEY CLUB, FILING NO. 1 AND CORRECTION PLAT, CORDILLERA VALLEY CLUB, FILING NO. 2 AND DOES NOT REPRESENT A SURVEY ON THE GROUND FOR THE PURPOSE OF DESCRIBING THIS PARCEL.

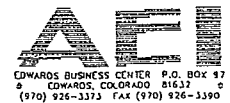


Sara J Fisher Eagle, CO 469 R 241.00
 817952
 Page: 19 of 48
 12/20/2002 02:51F
 D 0.00



LINE TABLE		
LINE	LENGTH	BEARING
L1	1348.54	N89°57'51"E
L2	1352.07	S89°31'09"E
L3	1336.53	S01°08'06"W
L4	442.37	S89°34'03"E
L5	14.37	S10°38'00"W
L6	566.60	S89°35'00"E
L7	2.81	S89°34'04"E
L8	780.70	S01°10'04"W
L9	353.28	S71°29'21"E
L10	81.19	S01°11'21"W
L11	70.01	S59°17'48"W
L12	2.68	N62°15'21"E
L13	97.06	S01°11'00"W
L14	299.09	N62°28'39"W
L15	313.20	N45°46'39"W
L16	170.01	N62°43'02"W
L17	629.59	N72°01'39"W
L18	766.11	N87°33'30"W
L19	846.22	S74°44'31"W
L20	478.41	N80°04'09"W
L21	288.40	N74°06'21"W
L22	383.52	N72°56'04"W
L23	202.25	N65°35'21"W
L24	699.18	N72°53'35"W
L25	223.42	N46°20'24"W
L26	467.50	N72°49'41"W
L27	580.45	N83°35'37"W
L28	520.55	S87°55'57"W
L29	853.62	S77°40'00"W
L30	406.58	S88°19'49"W
L31	1406.01	N00°32'02"E
L32	1507.30	N89°57'40"E
L33	1367.65	N00°47'59"E
L34	1351.70	S88°35'13"E
L35	1350.80	N89°50'55"E
L36	1336.24	S00°57'49"W

CURVE TABLE					
CURVE	LENGTH	RADIUS	DELTA	TANGENT	CHORD BEARING
C1	14.27	1028.91	00°47'41"	14.27	S11°47'48"W
C2	215.59	133.59	92°27'50"	192.95	S76°56'45"E
C3	281.20	203.60	79°08'05"	259.38	S70°16'39"E
C4	487.94	2141.80	13°03'11"	486.89	N83°58'39"E



817952

Page: 20 of 48
12/20/2002 02:51F